



Fletcher Fast Facts

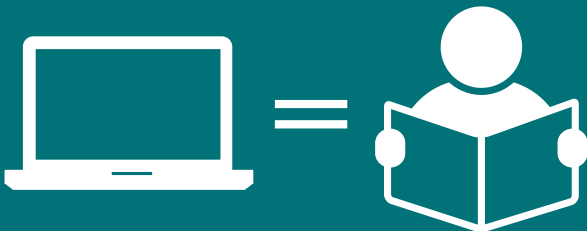
About Us

Founded in 1982, The Fletcher School serves students with learning differences by offering a multisensory, college preparatory curriculum that prepares them to reach their full potential. Our bright, talented, and often gifted students learn in small, structured classes with an average 6:1 student-to-teacher ratio. Individual and prescriptive learning plans are developed for each student.

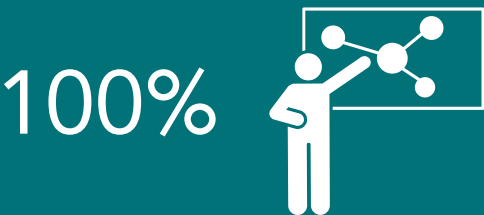
Through The Rankin Institute, The Fletcher School increases understanding and improves programs relating to learning disabilities by providing training, information, and services to parents, teachers, and other professionals in the community.



Fletcher graduates have earned over \$9 million in merit scholarship dollars over the past five years.



Fletcher is an Apple Distinguished School. Teachers leverage our 1:1 device program as one of many multisensory tools, helping students accommodate their specialized learning needs.



100% of Fletcher teachers are trained in and teach using the Orton-Gillingham Approach. This approach focuses on the social and emotional well-being, personal strengths, and educational needs of each learner.



What Sets Us Apart

- Average 6:1 student-to-teacher ratio
- Individual and prescriptive plans of instruction for each student
- Multisensory learning techniques for all learners
- Full range of programs outside the classroom, including arts, athletics, clubs, and after school activities
- Self-advocacy training to help students understand their learning styles and strengths
- Strong communication and partnerships between the School and families for student success

Graduation Outcomes

- Fletcher graduates outperform graduates from North Carolina across each ACT academic area tested, indicating increased readiness for college-level work.
- Fletcher's full-time college counselor guides families and students through the college admission and accommodations processes.
- 71 graduates over the last five years were accepted into 261 colleges and postsecondary programs and awarded a total of \$9,183,295 in merit scholarships.

Students Served

We serve students with learning differences who may not be well served at traditional or independent schools. Our students have been diagnosed with learning differences that include dyslexia, dysgraphia, dyscalculia, and/or ADHD that is impacting their academic success.

Enrollment for 2024-2025

- 281 students
- 54% male, 46% female
- 13% students of color

Tuition for 2024-2025

- \$31,000 for Grades K-5
- \$32,600 for Grades 6-12
- \$800 Enrollment Fee for K-12

Financial Aid for 2023-2024

- Approximately 40% of Fletcher families benefit from a combination of North Carolina scholarships and financial aid.

Two School Divisions

- Lower/Intermediate – Grades K-5
- Middle/Upper – Grades 6-12



Jennifer Middlemas, Director of Enrollment Management, jmiddlemas@thefletchersschool.org

Elizabeth Ashe, Admission Associate, ease@thefletchersschool.org

Marie Arrington, Enrollment & Research Coordinator, marrington@thefletchersschool.org

8500 Sardis Road, Charlotte, NC 28270 | Tel: 704.365.4658 | Fax: 704.364.2978 | www.thefletchersschool.org