

THE FLETCHER SCHOOL

THE RANKIN INSTITUTE

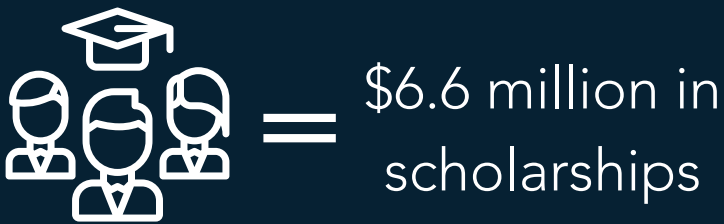
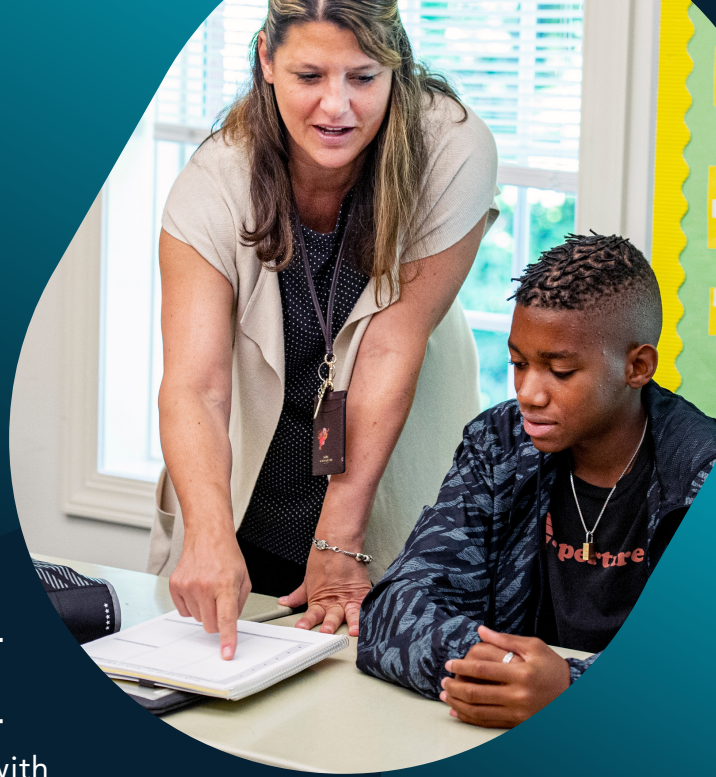
Where Performance Meets Potential

2021-2022 FLETCHER FAST FACTS

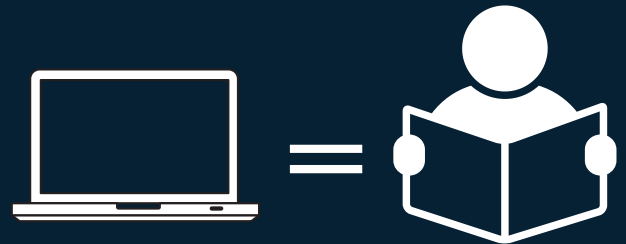
About Us

Founded in 1982, The Fletcher School serves students with learning differences by offering a multisensory, college preparatory curriculum that prepares them to reach their full potential. Our bright, talented, and often gifted students learn in small, structured classes with a 6:1 student-to-teacher ratio. Individual and prescriptive learning plans are developed for each student.

Through The Rankin Institute, The Fletcher School increases understanding and improves programs related to learning differences and attention deficit disorders by providing training, information, and services to parents, teachers, and other professionals in the community



Fletcher graduates have earned over \$6.6 million in scholarship dollars not including financial aid over the past 5 years



Teachers leverage our 1:1 technology program as one of many multisensory tools to ensure our students are receiving individualized education programs.



60% of Fletcher teachers achieved a graduate degree and every Fletcher School teacher is trained in Orton-Gillingham approach.



What Sets Us Apart

- Average 6:1 student-to-teacher ratio
- Individual and prescriptive plans of instruction developed for each student
- Multisensory learning techniques for all types of learners
- A full range of outside the classroom programs including arts, athletics, and other special student interests
- Self-advocacy training to help students understand their learning styles
- Strong family-school communication and partnerships for student success

Graduation Outcomes

- College preparatory curriculum based on North Carolina course of study
- 100% of Fletcher graduates have been accepted into over 170 different colleges and universities since the School's first graduating class in 2004
- 84 graduates over the last five years were accepted into 173 colleges and postsecondary programs and awarded a total of \$6,645,525 in scholarships

Students Served:

Serving students with learning differences that may not be well served at traditional independent or public schools. Our students have diagnosed learning differences that include dyslexia, dysgraphia, dyscalculia, and attention deficit disorders (Grades 6-12).

Enrollment for 2021-2022

- 283 students
- 57% male
- 43% female
- 13% students of color

Tuition (2021-2022)

- \$26,400 for Grades K-5
- \$27,850 for Grades 6-12
- \$800 Enrollment Fee for Grades K-12

Financial Aid (2021-2022)

- \$350,600 in Financial Aid were awarded to 30 families demonstrating qualified need

Two school divisions:

- Lower/Intermediate – Grades K-5
- Middle/Upper – Grades 6-12

School day:

- 8:00 a.m. – 2:30 p.m. for Grades K-5
- 8:00 a.m. – 3:00 p.m. for Grades 6-12



Jennifer Middlemas

Director Of Admissions
jmiddlemas@thefletcherschool.org



Jennifer Brost

Director of Advancement
jbrost@thefletcherschool.org

704-365-4658

WWW.THEFLETCHERSCHOOL.ORG

8500 SARDIS ROAD, CHARLOTTE, NC 28270

@fletcherfalcons

